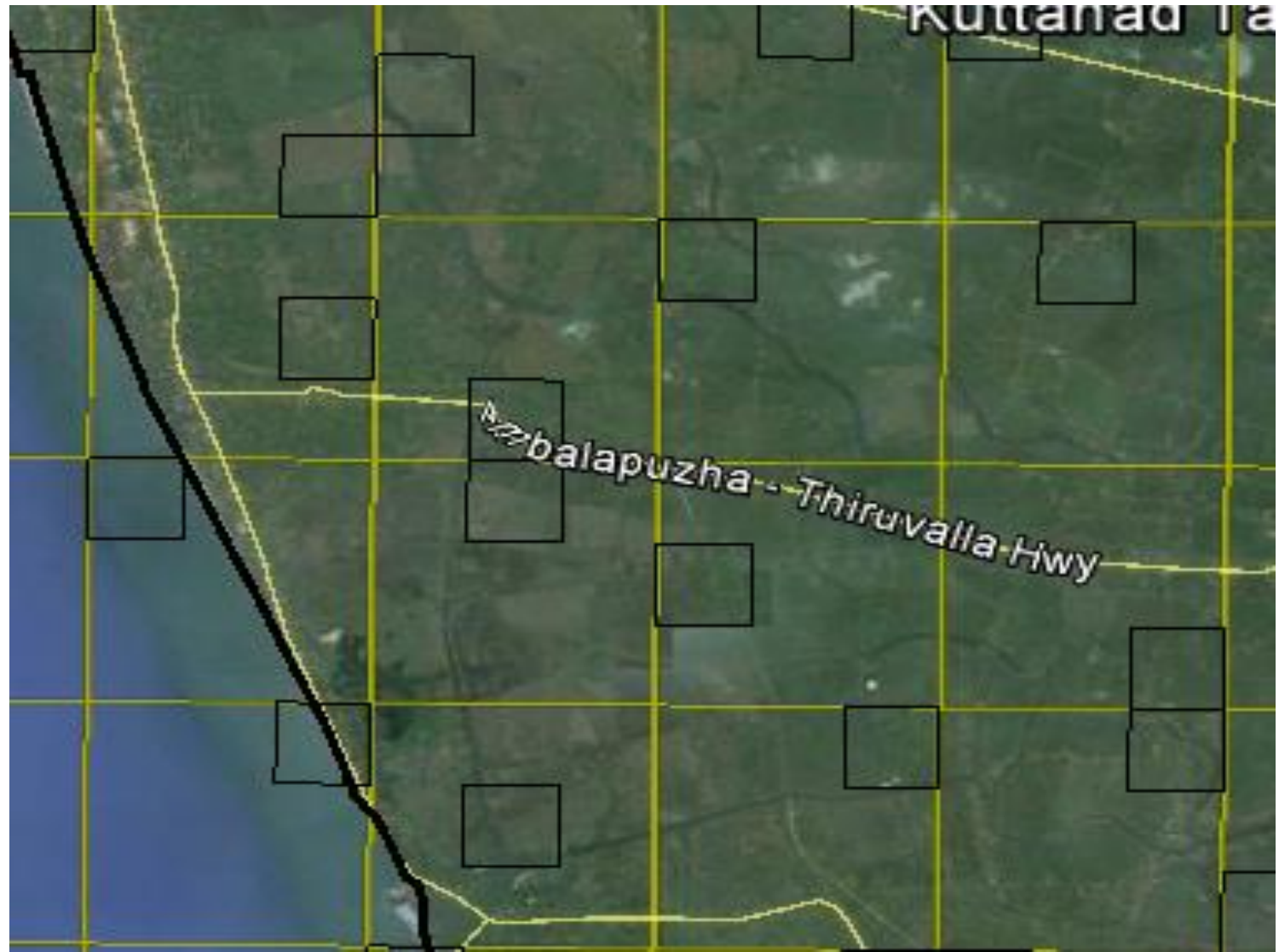


# BIRD ATLAS ALAPPUZHA

Results, Learnings & Concerns

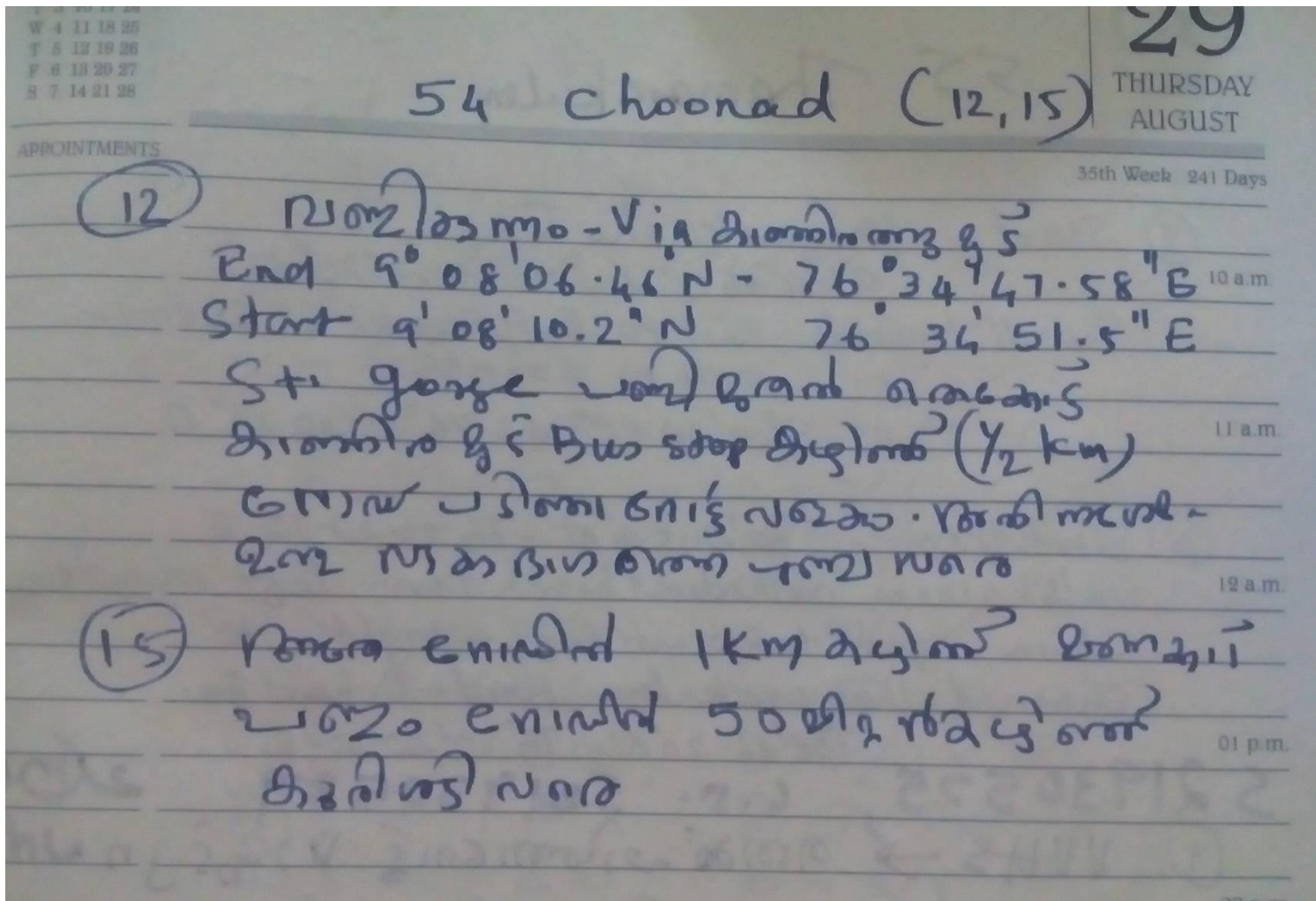
Proto atlas Alappuzha  
CBMP 2015 ( FEB 13-16)

- First email from Praveen.j about proto atlas on 2-2-2015
- KML files showing grids and subcells also received same date which works in google earth
-



- Discussed details with Jayakrishnan mannar, Vipin v nath sumesh PB how to run protoatlas
- Google earth works only on computers
- How to find subcells ?
- Discussion every evening

Sub cells are named, then wrote down the four corner  
 gps readings , zoomed into subcell landmarks  
 indentified wrote down in a diary



- Assigned subcells to each birders described the landmarks procedure explained
- 25 birders participated in the process
- Only 12 persons having active net access/computers
- Completed their task successfully

# Bird atlas Alappuzha

16/7/2015 to 13/9/2015 & 16/1/2016 to 15/3/2016

- 135 subcells identified and named starting from top left to right
- Subcell identification on field made east by Locusfree app
- A GREAT helping hand from GEORGE TOM



## Locus Map Free - Outdoor GPS

Asamm Software, s. r. o. Travel & Local

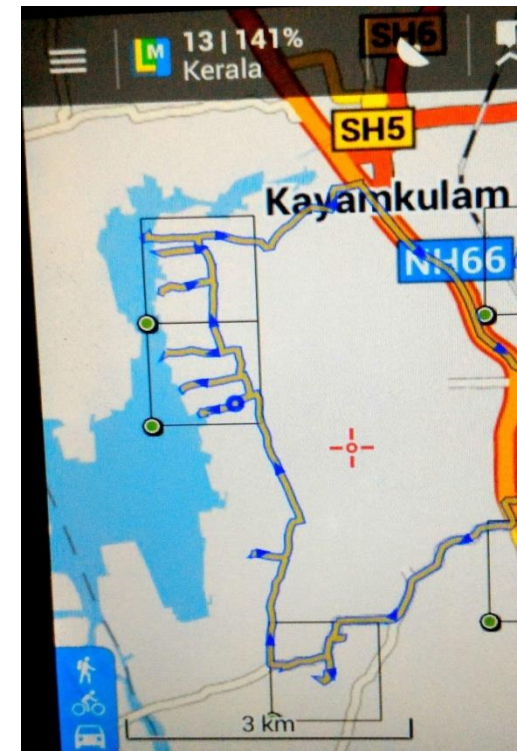
3+

Offers in-app purchases

- Later Google map was incorporated in to Locusfree app which seems more accurate details on field an idea by Sumesh PB
- Subcells allotted to birders discussed and detailed planning how to do maximum subcells with covering all type of habitats within it



- Preplanned routes drawn on Locus free maps and followed it
- Track recording also done
- Birders entered the lists in to eBird
- Those who doesn't have net ,lists were written in paper, handed over to coordinator for proxy entry



- The eBird entry serial numbers collected, compiled in the Excel sheet provided
- All the lists were reviewed –by copying the number from excel sheet pasting in review page -- a tedious procedure

- A phone call to Fouzia Arief made it easy
- Which lead to creation of online visualisation of atlas progress
- Another great helping hand

# Issues faced

- Adequate publicity should be given to general public about the atlas through media
- If possible Identification cards should be given to participants
- Participation certificate to students
- Google maps not accurate on district boundaries
- Some times routes in Google map is not dependable
- Lake cells, remote kuttanad paddyfields takes more time and money to cover
- New birders should be discovered from all areas of the district

THANKS